

HLA-B*27 Detection Kit

- Accurate results with Allele Specific PCR technology
- Detects more than 260 subtypes of HLA-B*27.
- Compatible with all real-time PCR instruments capable of melting curve analysis.

CE-IVD

Real-time
PCR



MULTIPLEX



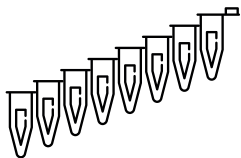
FAST



SENSITIVE

The geneMAP™ HLA-B*27 Detection Kit, discriminates the presence or absence of HLAB*27 alleles in a human genomic DNA extract from blood and detects the majority of disease-relevant HLA-B*27 subtypes. HLA-B*27 is a genetic risk factor for seronegative spondyloarthropathies, such as ankylosing spondylitis, reactive arthritis, juvenile rheumatoid arthritis and anterior uveitis.

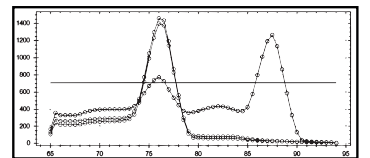
Simple real time - PCR Workflow



Sample preparation
Add DNA to the reaction mix



qPCR amplification
Multiplex qPCR using primers designed to amplify the DNA sequences specific to each SNP of interest



Data interpretation
SNPs are identified by allele-specific real time PCR.



Validated PCR Instruments

- Bio-Rad CFX96
- Life Technologies ABI-7500, QuantStudio Series
- Roche, Light Cycler 480 II
- Qiagen Rotor-Gene® 3000 Q5/Q6
- BioMolecular Systems, MicPCR

Ordering Information

B27-RT50

HLA-B*27

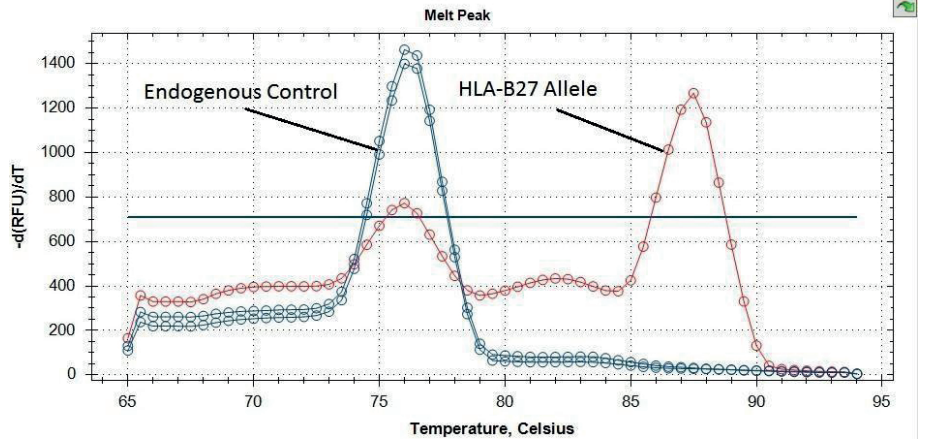
Detection Kit

50 tests **CE-IVD**

CE-IVD is available in the EU and countries outside EU accepting the CE-IVD certification. Available as RUO in all other countries.

Technical Specifications

The Real-time PCR Kit can detect HLA-B*27 Allele in Human Genomic DNA.



CONTENTS

10x HLA-B*27 Primer Probe Mix

2x Master Mix (with Evagreen)

RNase Free Water

Positive Control

VOLUME

110 µl

550 µl

400 µl

50 µl

In GENMARK SAĞLIK URUNLERI, we aim to create the top quality, time and cost efficient, trust-worthy and user-friendly products. We specialize in in-vitro detection kit production and development which is used for the diagnosis and treatment monitoring of many diseases connected to genetics, oncology, microbiology and hematological oncology.